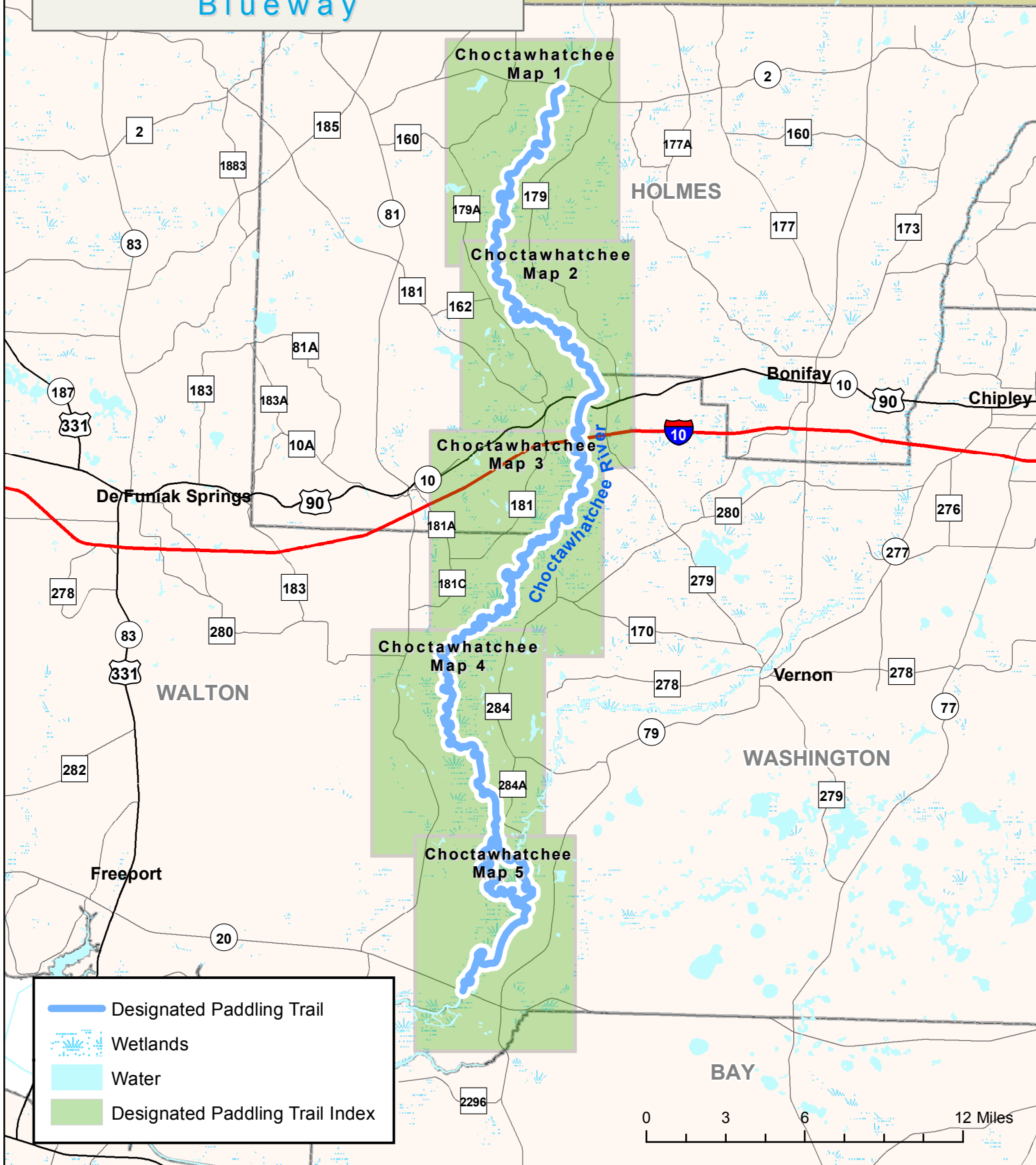


Florida Designated Paddling Trails

Choctawhatchee River Blueway



Choctawhatchee River Blueway Paddling Trail Map 1



Access Point 1: East Pittman Creek Landing
N: 30.9477 W: -85.8433

Access Point 2: Curry Ferry Boat Ramp
N: 30.9189 W: -85.8516

**Access Point 3:
Baker Landing Boat Ramp**
N: 30.8905 W: -85.8821



Choctawhatchee
River
Water Management
Area

CURRY FERRY RD

Choctawhatchee
River Water
Management Area

179

CLEMONS RD

BAKER LANDING LN

Choctawhatchee
River
Water Management
Area

- Choctawhatchee River Blueway
- Springs
- Improved Boat Ramp
- Picnic Facilities
- Restrooms
- Florida Conservation Lands
- Wetlands

0 0.5 1 2 Miles

Choctawhatchee River Blueway Paddling Trail Map 2



Access Point 4: Cerrogordo Landing
N: 30.8325 W: -85.8774

BUCK ROGERS

Choctawhatchee River
Water Management Area

179

TOBY RETHERFORD RD

BOAT RAMP RD

Access Point 5: Ward Landing
N: 30.8022 W: -85.8284

Choctawhatchee
River
Water Management
Area

Westville

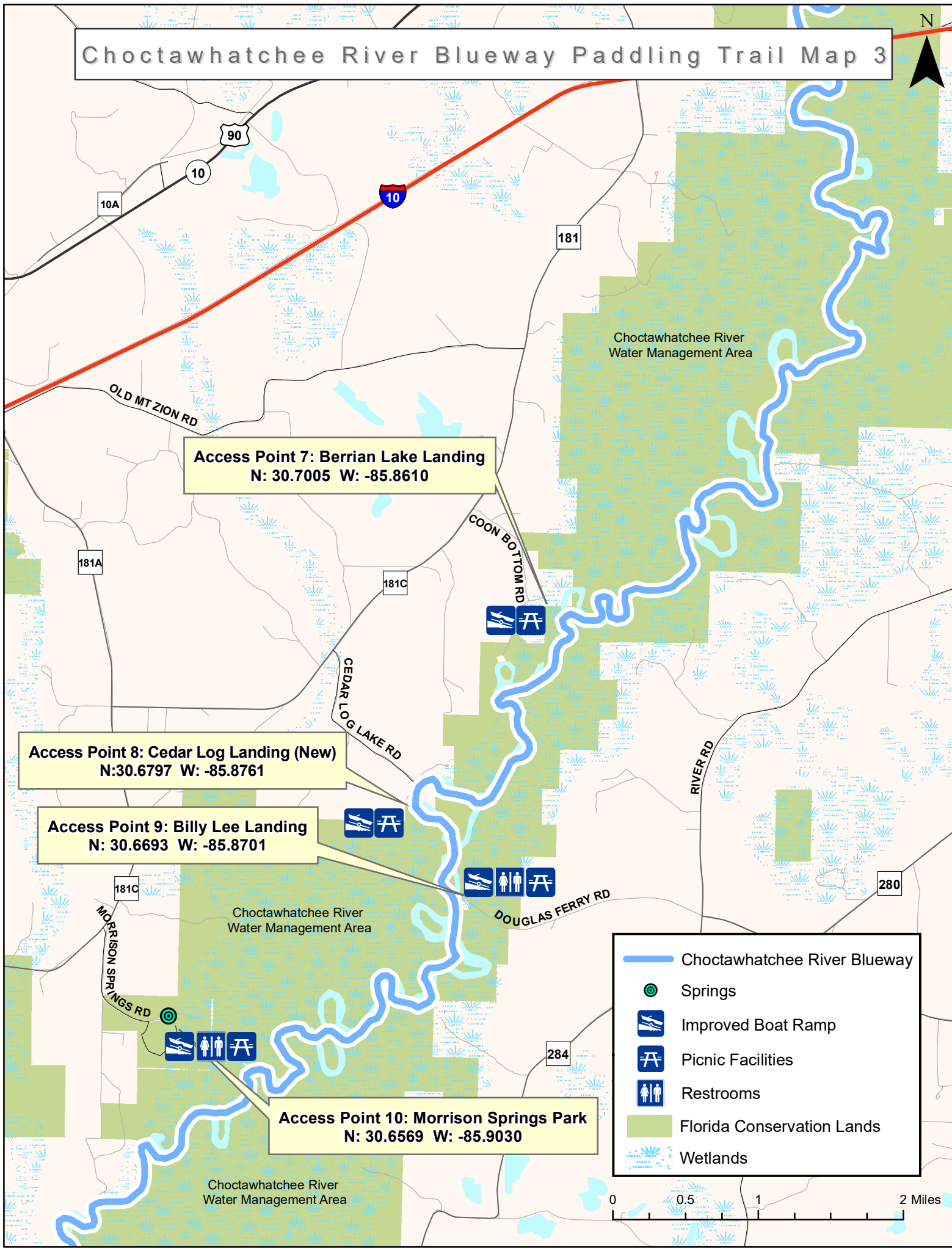
Caryville

**Access Point 6:
Caryville Landing**
N: 30.7752 W: -85.8269

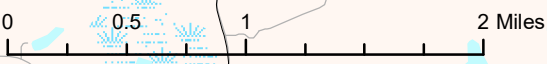
- Choctawhatchee River Blueway
- Springs
- Improved Boat Ramp
- Picnic Facilities
- Restrooms
- Florida Conservation Lands
- Wetlands

0 0.5 1 2 Miles

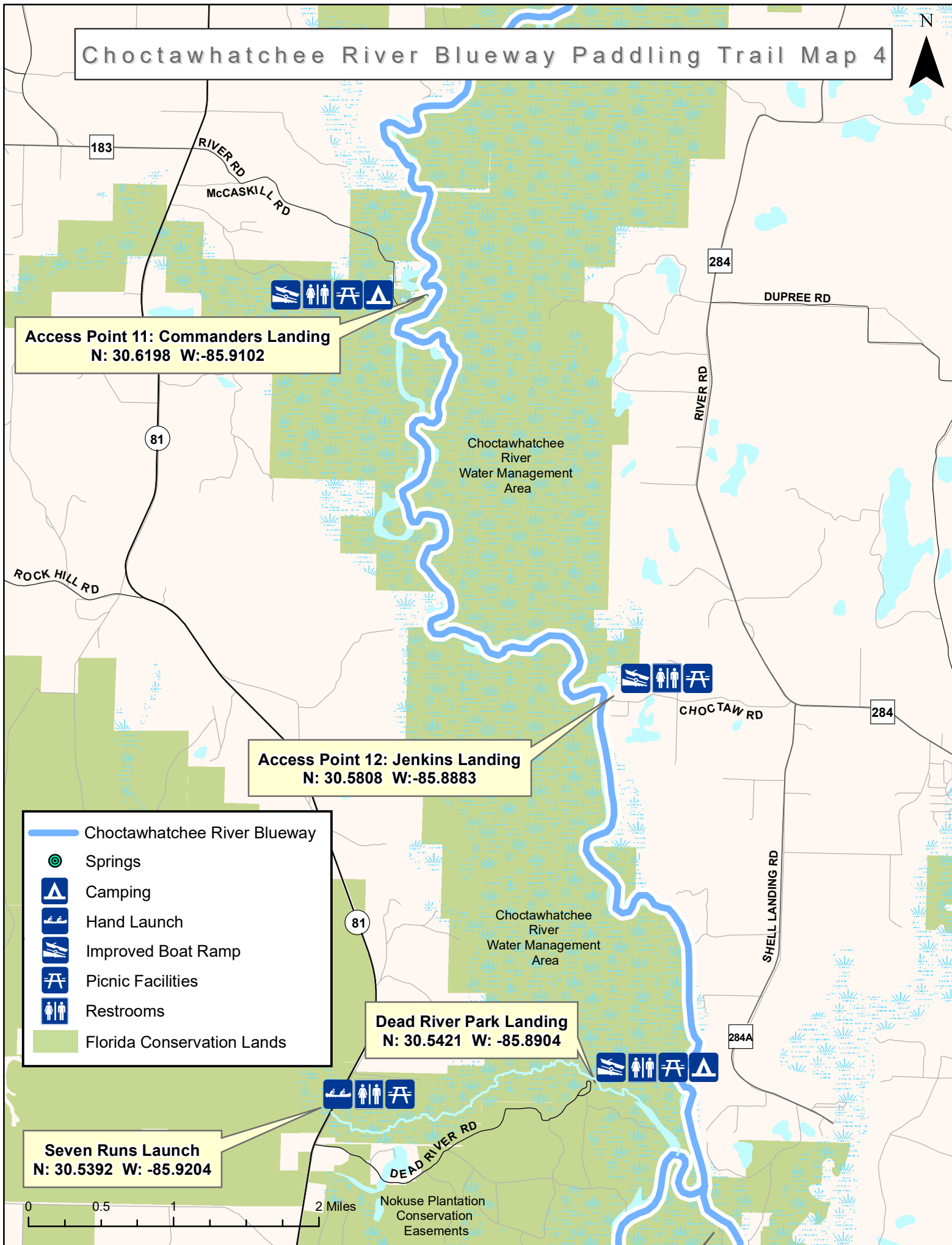
Choctawhatchee River Blueway Paddling Trail Map 3



- Choctawhatchee River Blueway
- Springs
- Improved Boat Ramp
- Picnic Facilities
- Restrooms
- Florida Conservation Lands
- Wetlands



Choctawhatchee River Blueway Paddling Trail Map 4



Access Point 11: Commanders Landing
N: 30.6198 W: -85.9102

Access Point 12: Jenkins Landing
N: 30.5808 W: -85.8883

Dead River Park Landing
N: 30.5421 W: -85.8904

Seven Runs Launch
N: 30.5392 W: -85.9204

- Choctawhatchee River Blueway
- Springs
- Camping
- Hand Launch
- Improved Boat Ramp
- Picnic Facilities
- Restrooms
- Florida Conservation Lands

0 0.5 1 2 Miles

Choctawhatchee River Blueway Paddling Trail Map 5



Access Point 13: Boynton Cutoff Landing
N: 30.5238 W: -85.8711

Nokuse Plantation
Conservation
Easements

Choctawhatchee River
Water Management Area

Access Point 14: Cedar Tree Landing
N: 30.4703 W: -85.8756

BELL COMMUNITY RD

CEDAR TR L D RD

Nokuse Plantation
Conservation
Easements

Choctawhatchee
River Water
Management Area

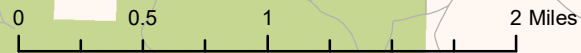
Ebro

Pine Log
State
Forest

STICKLAND RD

**Access Point 15:
Cowford Landing**
N: 30.4504 W: -85.8991

- Choctawhatchee River Blueway
- Springs
- Camping
- Improved Boat Ramp
- Picnic Facilities
- Restrooms
- Florida Conservation Lands
- Wetlands





Choctawhatchee Blueway Guide

The Waterway

The Choctawhatchee River is a journey into the heart of wild Florida where wildlife far outnumbers humans. This river is 170 miles long, beginning in Alabama with about 88 miles in Florida. It is possible to extend your adventure northward by launching in [Alabama](#). Expect to encounter few people or boats except near a few popular springs. The designated portion of this river is roughly a 64-mile stretch between SR 2 near the Alabama border to Cowford Landing on Hwy 20. The Choctawhatchee flood plain provides habitat for an array of native wildlife, with several endangered plant and animal species, including the federally threatened Gulf Sturgeon. There have been rumors of the believed-to-be-extinct [ivory-billed woodpecker](#) hidden among the primordial wetlands. The Choctawhatchee winds through a broad floodplain dotted with old growth hardwood forests and a few sparkling springs whose clear waters mingle with the tea-colored flow of the majestic river.

The Paddling Experience

Paddlers must check weather forecasts and water levels carefully as the Choctawhatchee's flow will fluctuate with seasonal rainfall, and sudden rises may result from heavy rains. The river is mostly undeveloped and primitive camping options are limited the first 25 miles or so to exposed sand bars that may not be available if water levels are high. The best levels for paddling (and camping) are less than 10 feet at the [USGS Water Gauge near Pittman](#). The river is generally suitable for paddling during drought conditions but may not be navigable for power boats on the upper section. There is little to no development along the river for those seeking immersion in wilderness. Many of the access points are very isolated so consider arranging shuttling and secure parking with a local outfitter. It is possible to paddle the river to its mouth at the Choctawhatchee Bay, however this section can become confusing to navigate. Use detailed maps or hire a guide.

Access Points

#1, Start of the trail, East Pittman Creek Landing, east side of river



Access is located in a park on a small bluff overlooking the Choctawhatchee River. *Directions: just south of the Hwy 2 bridge on the east side of the river.*

#2, Mile 2.6, Curry Ferry Ramp, east side of the river.



Long, steep single lane concrete boat ramp. Very shallow at low river levels. *Directions: Turn west from Hwy 179 onto the south entrance of Curry Ferry Rd marked with boat ramp sign, 0.9 miles to ramp.*

#3, Mile 6.7, Baker Landing Ramp (aka Warehouse Landing), west side of the river



Single concrete boat ramp. Very shallow at low river levels. *Directions: From Hwy 179A, go east 1.5 miles on Baker Landing Lane.*

#4, Mile 12.0, Cerro Gordo Landing, west side of the river,



Directions: from CR 179A turn east on Buck Rogers Road (CR 162) and follow paved road to the river.



Choctawhatchee Blueway Guide

#5, Mile 18.4, Ward Landing, east side of river,

Single concrete boat ramp. *Directions: From Hwy 179, turn south on Boat Ramp Rd, go 0.6 miles to first dirt road to the right, turn and follow to the end.*

#6, Mile 21, US 90, (Caryville Landing), east side of river

Single lane concrete boat ramp with lots of parking, small picnic area a hundred yards east of the ramp. *Directions: east side of the Hwy 90 bridge.*

#7, Mile 32, Berrian Lake Landing, west side of river

Single lane concrete boat ramp on short slough just west of the Choctawhatchee River. *Directions: Turn off CR 181C onto Coon Bottom Road which turns into Berrian Lake Rd. Turn east on Landing Road.*

#8, Mile 34, Cedar Log Landing (new), west side of river

Directions: Turn off Hwy 181 onto Cedar Log Lake Rd, look for "Cow Lake" sign. Keep right when the road forks and ends at the river.

#9, Mile 35, Billy Lee Landing (Douglas Ferry Landing), east side of river

Two wide single lane concrete boat ramps. Northern ramp has a lot of shoaling and is usable only by hand-launch boats. Southern one is more suitable. *Directions: From CR 284 (River Rd.) turn west on Douglas Ferry Rd, follow gravel road 1.7 miles to boat ramp.*

#10, Mile 39, Morrison Springs, west side of river

This popular swimming and scuba diving area can be packed with visitors on weekends and in summer. Improved boat ramp is located south of the main Morrison Springs. Open sunrise to sunset, no fee. *Directions: From Interstate 10, take Exit 96 onto Highway 81 South. Go about 6 miles, turn left on Highway 181-A. Go 1.5 miles, turn right onto Morrison Springs Road.*

#11, Mile 43.5, Commanders (River) Landing, west side of river

Small county park with improved boat ramp. *Directions: Turn east on River Rd at flashing light on Hwy 81. Go 2.5 miles to end of the road.*

#12, Mile 49, Jenkins Landing, east side of river

Small county park with improved boat ramp. *Directions: From SR 79 turn west on CR 284 (Millers Ferry Rd), then west on Choctaw Rd, follow to end of the road.*

Seven Runs side trip to Dead River Landing, west side of river

The charming, shallow 2.3-mile Seven Runs Creek begins at small county park northwest side of the bridge on CR 81 and ends near slough at Dead River Landing. It is a short distance to the Choctawhatchee. Dead River Landing offers camping by [reservations](#) only, RV sites, picnicking, portable restrooms, improved boat launch. *Directions: From SR 81 turn east on Dead River Rd and follow 2.3 miles to the end.*

#13, Mile 54, Boynton Cutoff Landing

The Boynton Landing Recreation Area campsite is available by [reservation](#) only and has a capacity of eight people and two vehicles. This campsite is available for campers with tents, vans and pickup-mounted campers only (no RVs or travel/camping trailers). The campsite does not have power, water or waste disposal hookups. *Directions: From CR 284 turn south on Shell Landing Rd. Go 3.1 miles and turn west on Boynton Cutoff Rd. Stay left at the fork and drive through former RV park posted 'No trespassing' until end of the road.*



Choctawhatchee Blueway Guide

#14, Mile 60.5, Cedar Tree Landing, east side of river



Fee to launch, improved ramp with steep incline. *From SR 79 turn west on Cedar Tree Rd., follow to end.*

#15, Mile 64, End of the Trail, Cowford Landing, south side of Hwy 20 Bridge



Improved launch, ample parking and picnic pavilion. Recent additions include two screened-in pavilions for overnight camping, restrooms, canoe/kayak racks and a more accessible canoe/kayak launch. For reservations for the camping pavilions, call Walton County Parks and Recreation at 850-892-8700.

Outfitters and Shuttle Service

Holmes Creek Canoe Livery, SR 79, Vernon, 850-210-7001

Base Camp

Lodging along the river is available about 2 miles downstream from the trail's end at Cowford Landing at the Choctaw Lodge Bed and Breakfast Retreat (850) 835-1784. About 20 miles downstream of Cowford Landing near Choctawhatchee Bay is Live Oak Landing RV & Cottage Resort (877) 436-5063.

